

**CREB3L2 Antibody (N-Term)**  
**Peptide-affinity purified goat antibody**  
**Catalog # AF4010a****Specification**

---

**CREB3L2 Antibody (N-Term) - Product Information**

Application	WB, IHC, E
Primary Accession	<a href="#">Q70SY1</a>
Other Accession	<a href="#">NP_919047.2</a> , <a href="#">NP_001240704.1</a> , <a href="#">64764</a>
Reactivity	Human
Host	Goat
Clonality	Polyclonal
Concentration	0.5 mg/ml
Isotype	IgG
Calculated MW	57415

**CREB3L2 Antibody (N-Term) - Additional Information****Gene ID** 64764**Other Names**

Cyclic AMP-responsive element-binding protein 3-like protein 2, cAMP-responsive element-binding protein 3-like protein 2, BBF2 human homolog on chromosome 7, Processed cyclic AMP-responsive element-binding protein 3-like protein 2, CREB3L2, BBF2H7

**Dilution**

WB~~1:1000  
IHC~~1:100~500  
E~~N/A

**Format**

0.5 mg/ml in Tris saline, 0.02% sodium azide, pH7.3 with 0.5% bovine serum albumin

**Storage**

Maintain refrigerated at 2-8°C for up to 6 months. For long term storage store at -20°C in small aliquots to prevent freeze-thaw cycles.

**Precautions**

CREB3L2 Antibody (N-Term) is for research use only and not for use in diagnostic or therapeutic procedures.

**CREB3L2 Antibody (N-Term) - Protein Information****Name** CREB3L2**Synonyms** BBF2H7

**Function**

Transcription factor involved in unfolded protein response (UPR). In the absence of endoplasmic reticulum (ER) stress, inserted into ER membranes, with N-terminal DNA-binding and transcription activation domains oriented toward the cytosolic face of the membrane. In response to ER stress, transported to the Golgi, where it is cleaved in a site-specific manner by resident proteases S1P/MBTPS1 and S2P/MBTPS2. The released N-terminal cytosolic domain is translocated to the nucleus to effect transcription of specific target genes. Plays a critical role in chondrogenesis by activating the transcription of SEC23A, which promotes the transport and secretion of cartilage matrix proteins, and possibly that of ER biogenesis-related genes (By similarity). In a neuroblastoma cell line, protects cells from ER stress-induced death (PubMed:<a href="http://www.uniprot.org/citations/17178827" target="\_blank">17178827</a>). In vitro activates transcription of target genes via direct binding to the CRE site (PubMed:<a href="http://www.uniprot.org/citations/17178827" target="\_blank">17178827</a>).

**Cellular Location**

Endoplasmic reticulum membrane {ECO:0000250|UniProtKB:Q8BH52}; Single-pass type II membrane protein Note=ER membrane resident protein. Upon ER stress, translocated to the Golgi apparatus where it is cleaved. The cytosolic N-terminal fragment (processed cyclic AMP-responsive element-binding protein 3-like protein 1) is transported into the nucleus. {ECO:0000250|UniProtKB:Q8BH52}

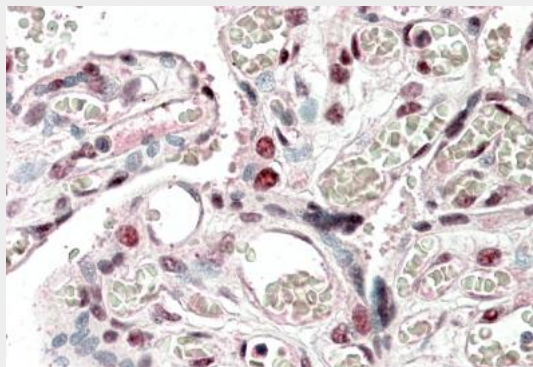
**Tissue Location**

Widely expressed with highest levels in placenta, lung, spleen and intestine, and lowest levels in heart, brain, skeletal muscle, thymus, colon and leukocytes. In fetal tissues, the weakest expression is detected in brain and heart

**CREB3L2 Antibody (N-Term) - Protocols**

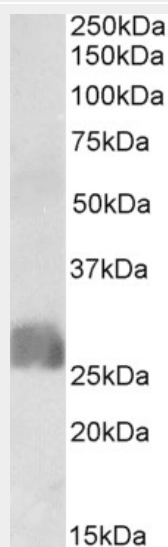
Provided below are standard protocols that you may find useful for product applications.

- [Western Blot](#)
- [Blocking Peptides](#)
- [Dot Blot](#)
- [Immunohistochemistry](#)
- [Immunofluorescence](#)
- [Immunoprecipitation](#)
- [Flow Cytometry](#)
- [Cell Culture](#)

**CREB3L2 Antibody (N-Term) - Images**

AF4010a (5 µg/ml) staining of paraffin embedded Human Placenta. Steamed antigen retrieval

with citrate buffer pH 6, AP-staining.



AF4010a (1 µg/ml) staining of Human Placenta lysate (35 µg protein in RIPA buffer). Primary incubation was 1 hour. Detected by chemiluminescence.

#### **CREB3L2 Antibody (N-Term) - Background**

This antibody is expected to recognize both reported isoforms (NP\_919047.2; NP\_001240704.1).

#### **CREB3L2 Antibody (N-Term) - References**

BBF2H7-mediated Sec23A pathway is required for endoplasmic reticulum-to-Golgi trafficking in dermal fibroblasts to promote collagen synthesis. Ishikura-Kinoshita S, Saeki H, Tsuji-Naito K. The Journal of investigative dermatology 2012 Aug 132 (8): 2010-8. PMID: 22495181